

DRONACHARYA
College of Engineering

Computer Science & Engineering

Data Communication and Computer
Networks

(MTCSE-101-A)

21-2 ICMP

*The IP protocol has no error-reporting or error-correcting mechanism. The IP protocol also lacks a mechanism for host and management queries. The **Internet Control Message Protocol (ICMP)** has been designed to compensate for the above two deficiencies. It is a companion to the IP protocol.*

Topics discussed in this section:

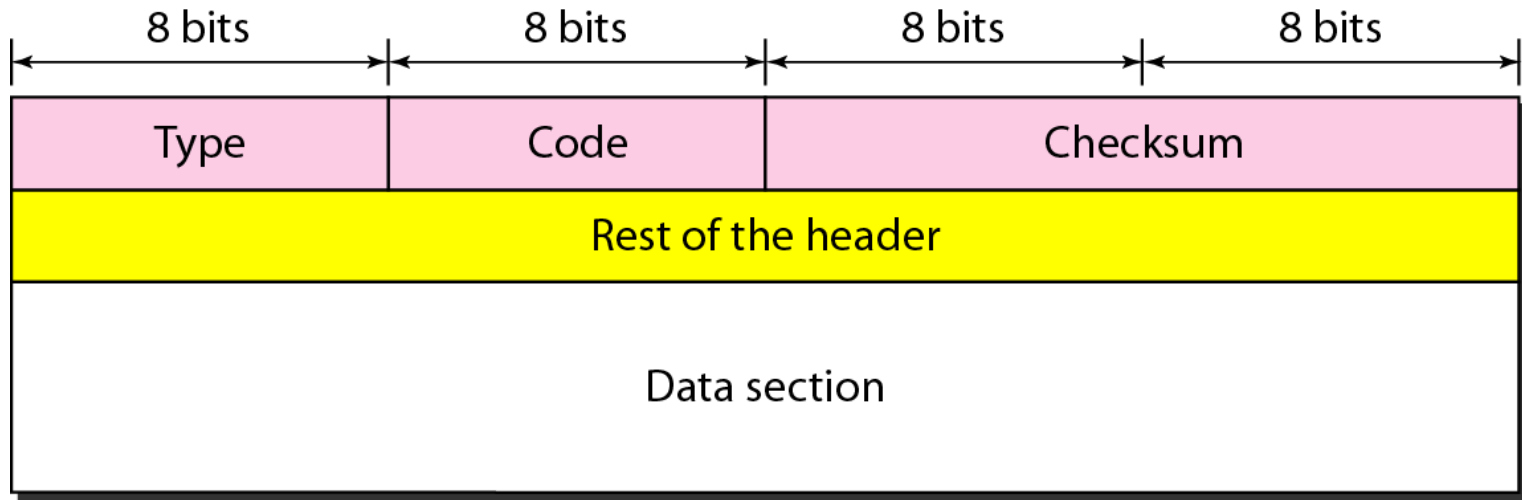
Types of Messages

Message Format

Error Reporting and Query

Debugging Tools

Figure 21.8 *General format of ICMP messages*

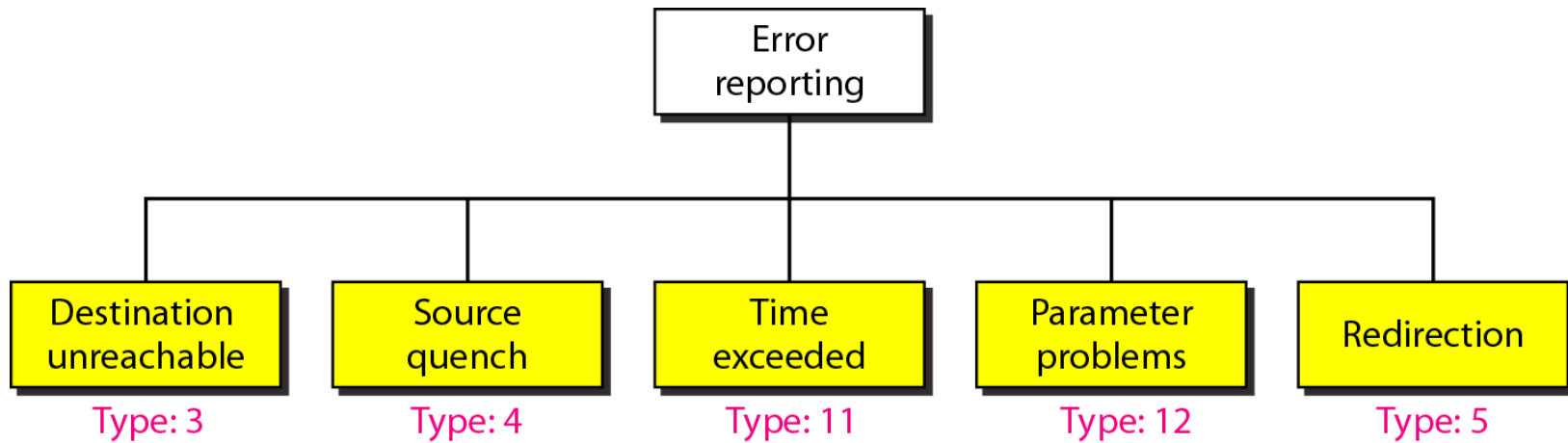




Note

ICMP always reports error messages to the original source.

Figure 21.9 *Error-reporting messages*





Note

Important points about ICMP error messages:

- ❑ No ICMP error message will be generated in response to a datagram carrying an ICMP error message.**
- ❑ No ICMP error message will be generated for a fragmented datagram that is not the first fragment.**
- ❑ No ICMP error message will be generated for a datagram having a multicast address.**
- ❑ No ICMP error message will be generated for a datagram having a special address such as 127.0.0.0 or 0.0.0.0.**

Figure 21.10 *Contents of data field for the error messages*

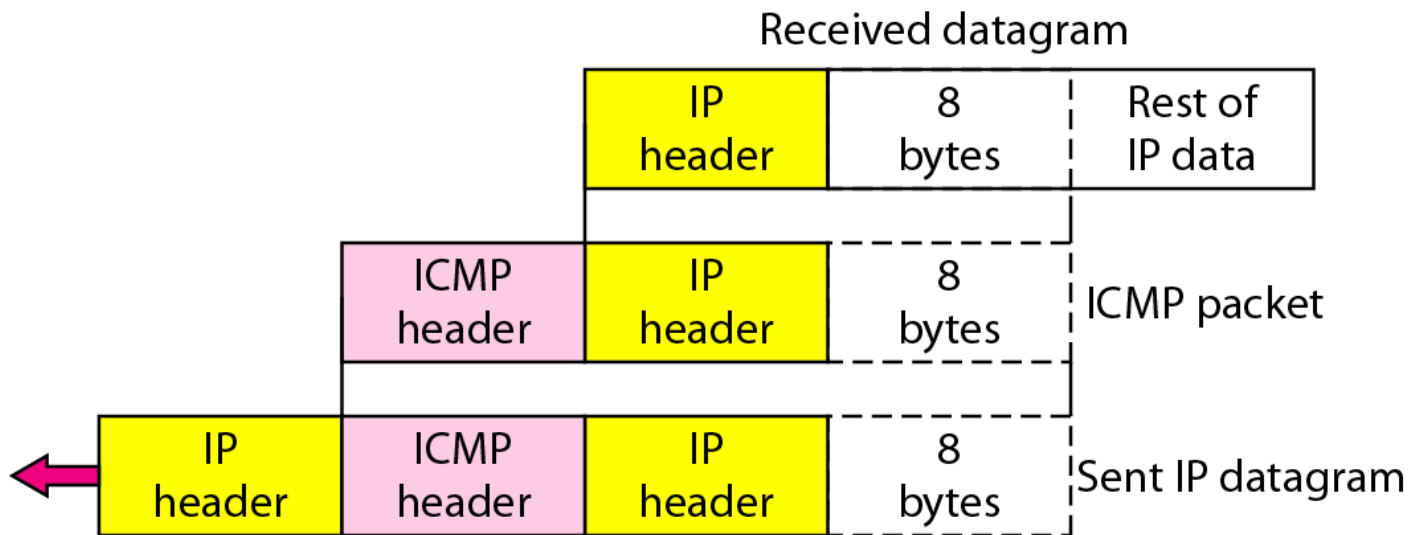


Figure 21.11 *Redirection concept*

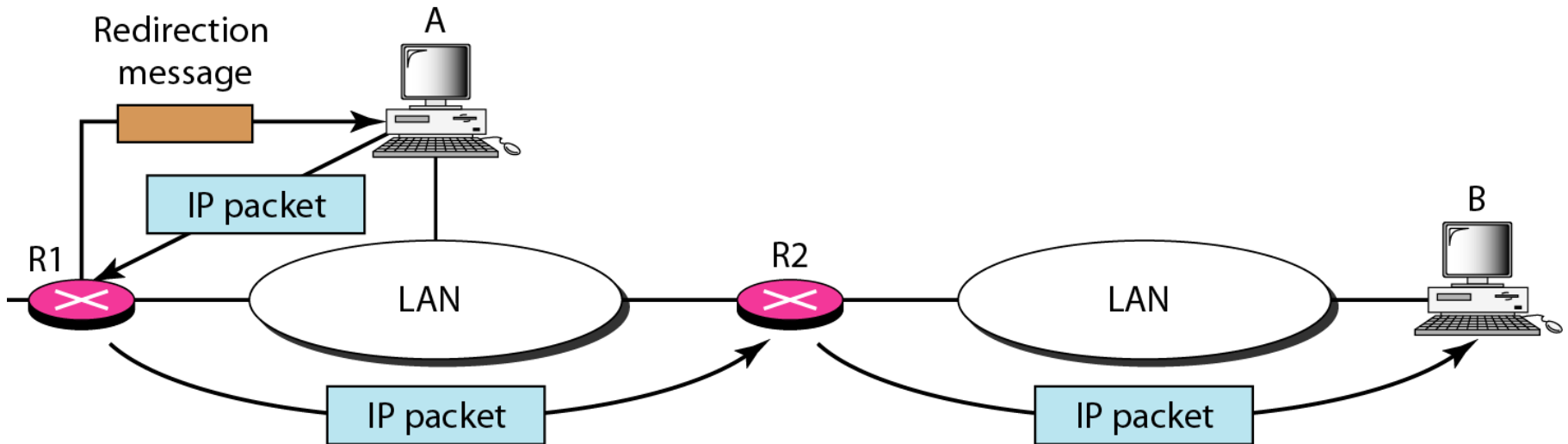


Figure 21.12 *Query messages*

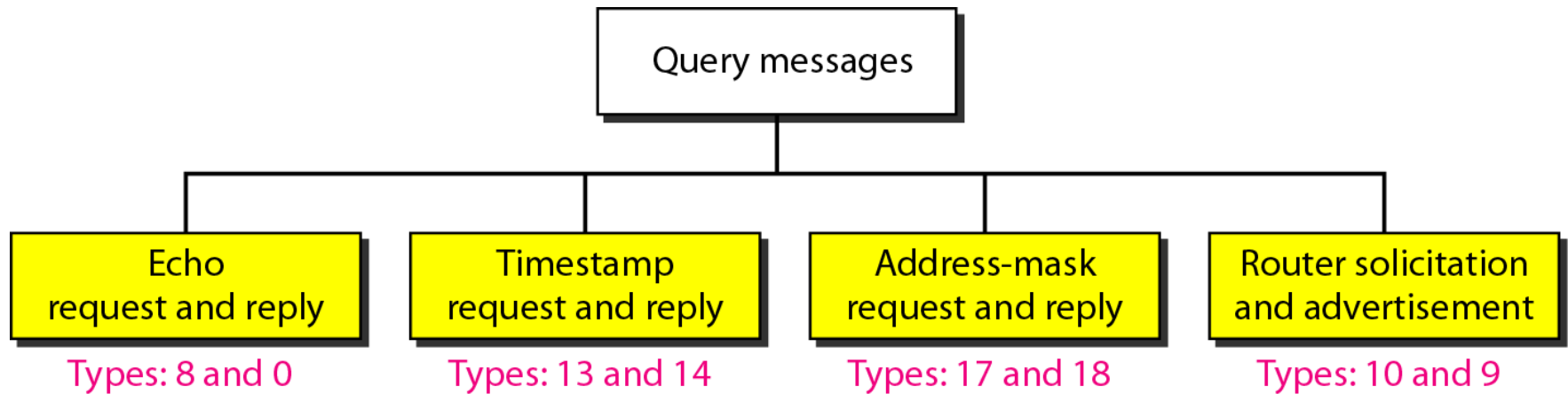


Figure 21.13 *Encapsulation of ICMP query messages*



21-3 IGMP

The IP protocol can be involved in two types of communication: unicasting and multicasting. The Internet Group Management Protocol (IGMP) is one of the necessary, but not sufficient, protocols that is involved in multicasting. IGMP is a companion to the IP protocol.

Topics discussed in this section:

Group Management

IGMP Messages and IGMP Operation

Encapsulation

Netstat Utility

Figure 21.16 *IGMP message types*

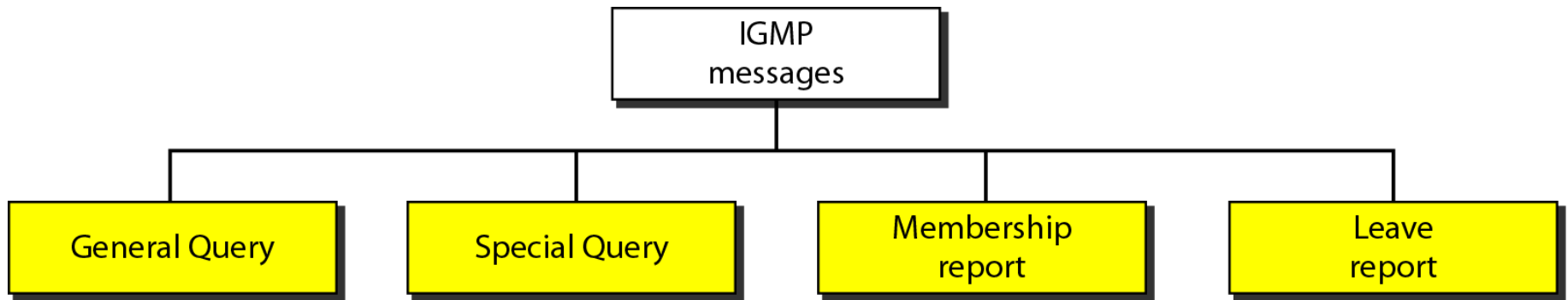


Figure 21.17 *IGMP message format*

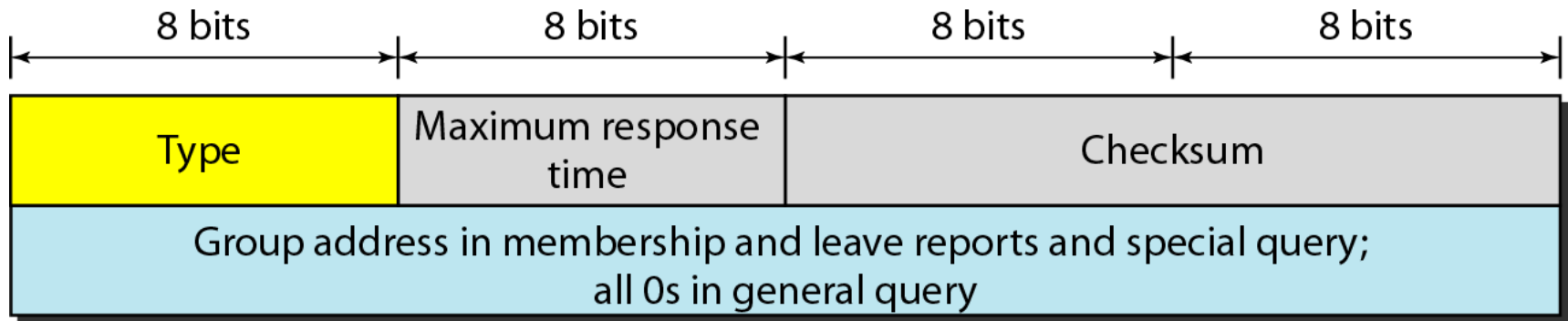
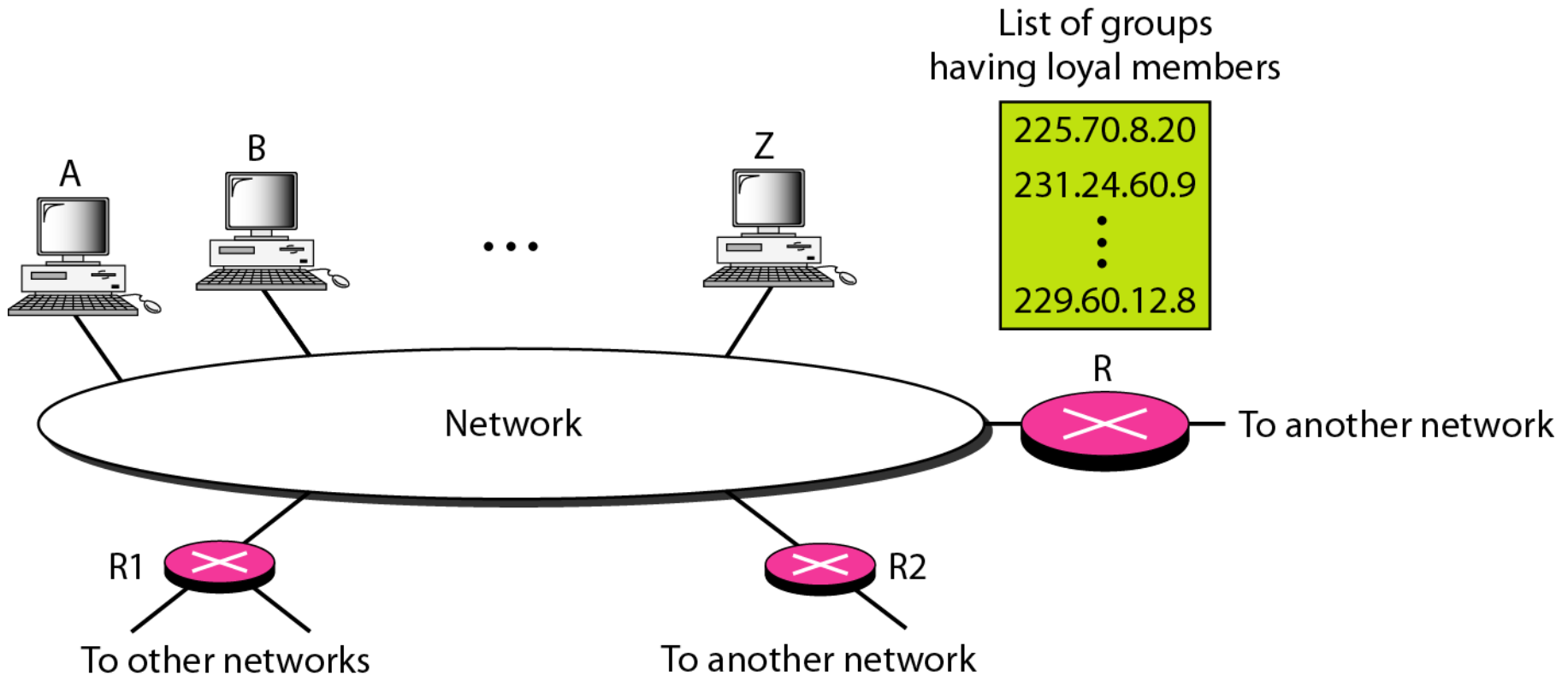


Table 21.1 *IGMP type field*

<i>Type</i>	<i>Value</i>
General or special query	0x11 or 00010001
Membership report	0x16 or 00010110
Leave report	0x17 or 00010111

Figure 21.18 *IGMP operation*





Note

In IGMP, a membership report is sent twice, one after the other.



Note

**The general query message does not
define a particular group.**